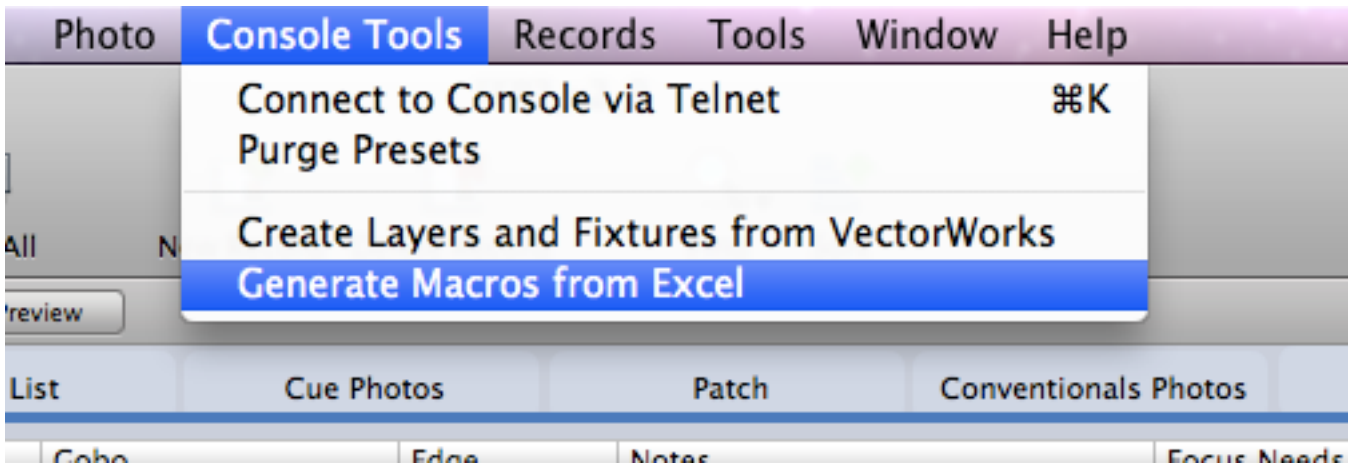
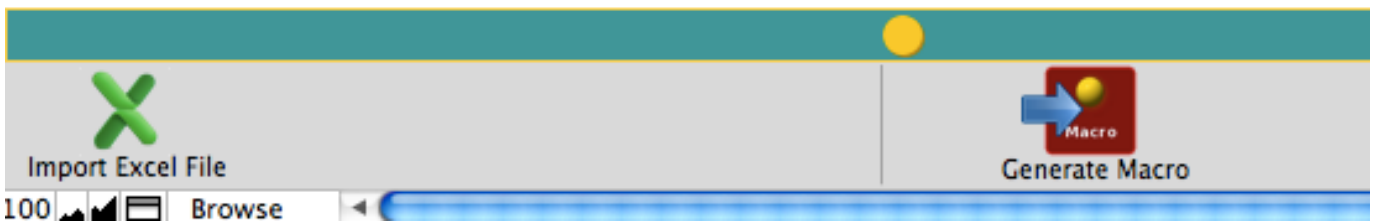


# FFP2 Custom Macro Creation

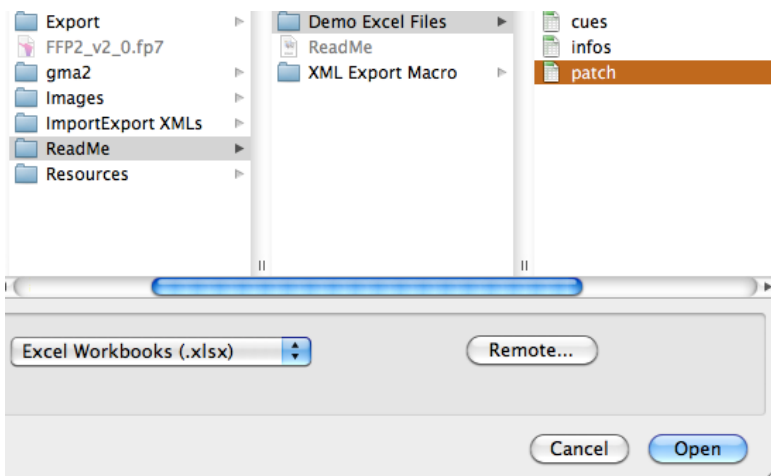
1. Choose 'Generate Macros' from the Console Tools menu



2. From the lower toolbar, click 'Import Excel File'




3. Choose any Excel file that is formatted so the first row is the same as the examples in the folder /FFP2/ReadMe/Demo Excel Files.



4. Click on the column headlines if you need to wrap segments in Quotation Marks

Patch Generator		Macro Generator						
User_1	User_2	User_3	User_4	User_5	User_6	User_7	User_8	User_9
?	1	At Dmx	1.43	/Break=1				
?	2	At Dmx	1.49	/Break=1				
?	3	At Dmx	1.55	/Break=1				
?	4	At Dmx	1.61	/Break=1				
?	5	At Dmx	1.67	/Break=1				
?	6	At Dmx	1.73	/Break=1				
?	7	At Dmx	1.79	/Break=1				
?	8	At Dmx	1.85	/Break=1				
?	9	At Dmx	1.91	/Break=1				
?	10	At Dmx	1.97	/Break=1				
?	11	At Dmx	2.03	/Break=1				
?	12	At Dmx	2.09	/Break=1				
?	13	At Dmx	2.15	/Break=1				
?	14	At Dmx	2.21	/Break=1				
?	15	At Dmx	2.27	/Break=1				
?	16	At Dmx	2.33	/Break=1				

Assign Channel 1 At Dmx 1.43 /Break=1

Import Excel File  Generate Macro

5. Generate Macro; it will be saved into /FFP2/gma2/macros.